



Mission
THIRTEEN

Endangered animals

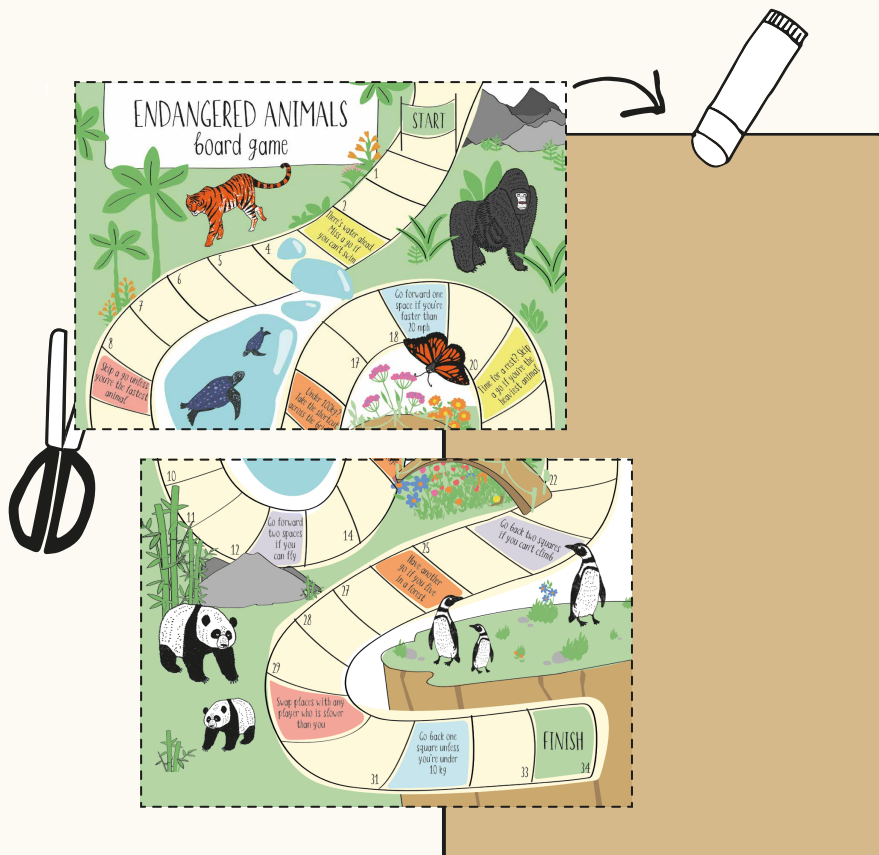
Learn all about endangered
animals with this fact-filled
board game. Better start
working on your best ROAR.

How to get ready:

1. Cut out the two pages for the board and stick them together onto some cardboard. This will help it last through lots of games.

2. Cut out your dice and fact cards. See page 4. Place the fact cards face down by the board.

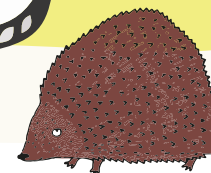
3. Find a different counter for each player. These can be paperclips, bottle tops, coins or buttons.



How to play:

1. Deal an animal fact card to each player.
2. The player with the animal with the longest name goes first and rolls the dice.
3. Move that many steps along. The player to the left goes next.
4. If you land on an obstacle, you must check your animal card and follow the instructions.
5. The first player to land exactly on the final square wins.

Fancy another game? Just shuffle the animal fact cards and start again.



ENDANGERED ANIMALS board game

START

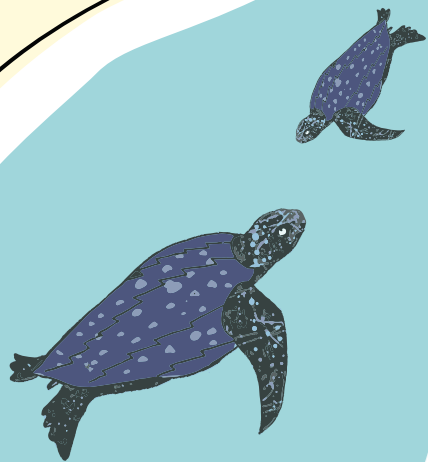


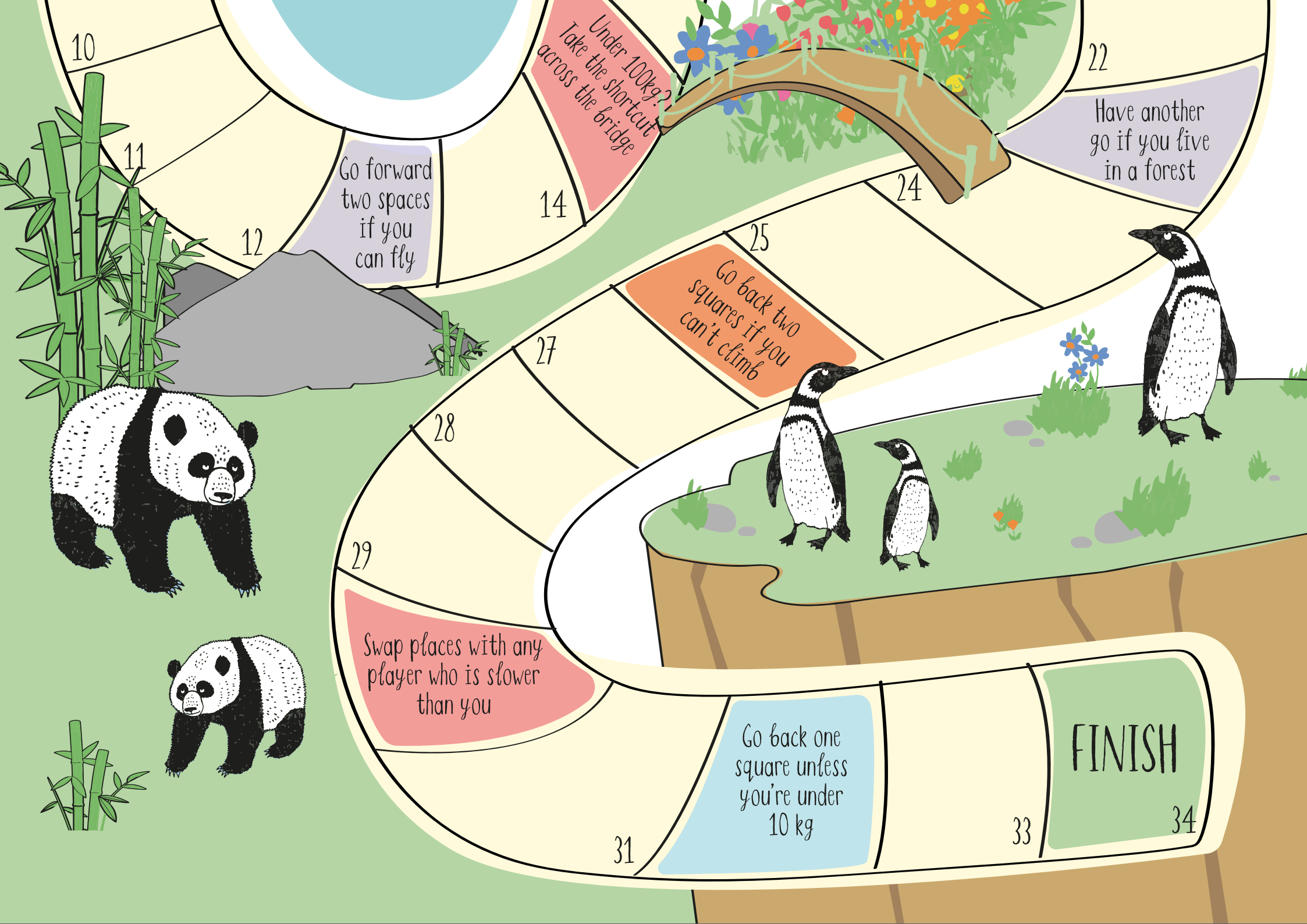
There's water ahead.
Miss a go if
you can't swim

Go forward one
space if you're
faster than
20 mph

Skip a go unless
you're the fastest
animal

Time for a rest? Skip
a go if you're the
heaviest animal





10

11

12

14

22

24

25

27

28

29

31

33

34

Under 100kg?
Take the shortcut
across the bridge

Go forward
two spaces
if you
can fly

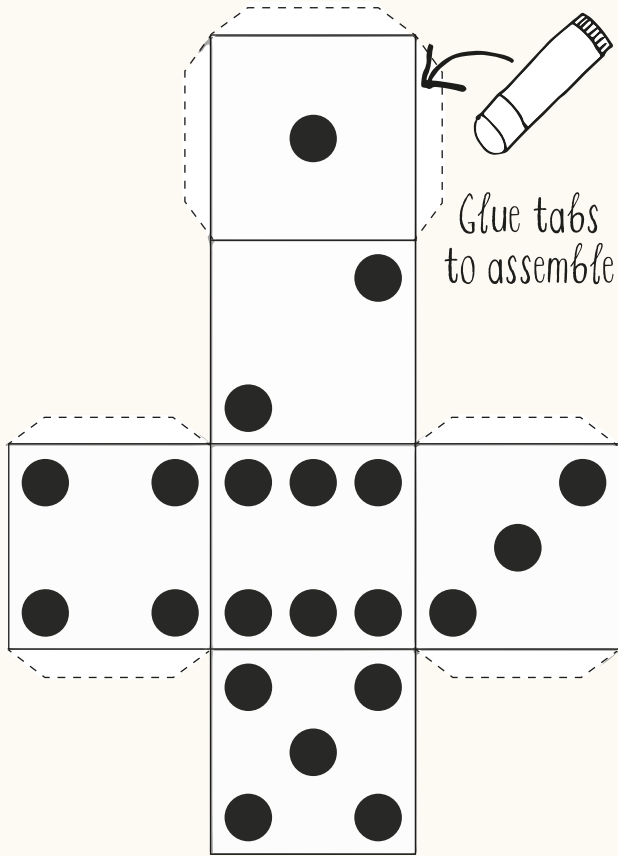
Go back two
squares if you
can't climb

Have another
go if you live
in a forest

Swap places with any
player who is slower
than you

Go back one
square unless
you're under
10 kg

FINISH



G IANT PANDA



Habitat: Bamboo forests
Top speed: 20 mph
Average weight: 130 kg
Secret skill: A quick tree-climber and swimmer

T IGER



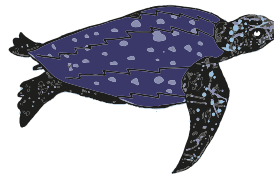
Habitat: Rain forests and grasslands
Top speed: 40 mph
Average weight: 180 kg
Secret skill: An excellent swimmer

M ONARCH BUTTERFLY



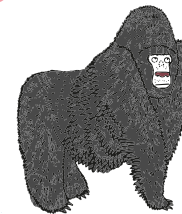
Habitat: Fields and meadows
Top speed: 5 mph
Average weight: less than 1 gram
Secret skill: Can fly 2000 miles each year

L EATHERBACK TURTLE



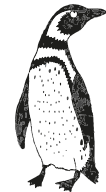
Habitat: Oceans
Top speed: 6 mph
Average weight: 900 kg
Secret skill: Uses powerful front flippers to swim

M OUNTAIN GORILLA

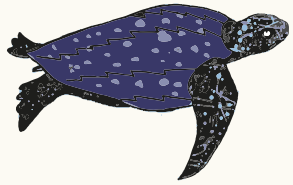


Habitat: Forests
Top speed: 20 mph
Average weight: 180 kg
Secret skill: Can climb trees to look for food

M AGELLANIC PENGUIN



Habitat: Coastal areas and islands
Top speed: 22 mph
Average weight: 8 kg
Secret skill: Can dive underwater for a few minutes



LEATHERBACK
TURTLE

Bluefin tuna have retractable fins to make them super speedy

BLUEFIN TUNA

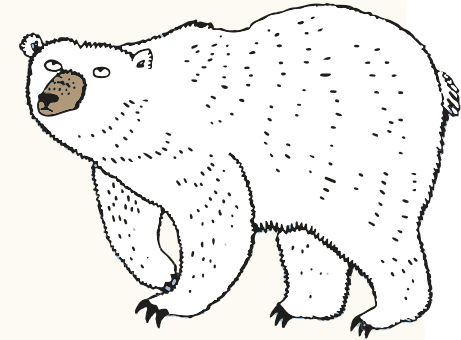


GIANT PANDA



A polar bear's fur is transparent and reflects light to look white

POLAR
BEAR



Walrus use their tusks to lift themselves onto the sea ice



MONARCH
BUTTERFLY

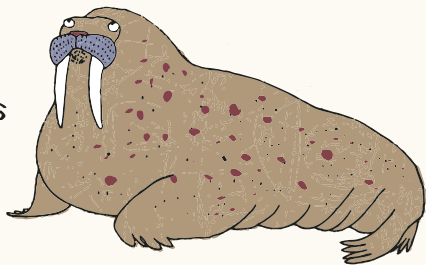
ENDANGERED ANIMALS

Animals which are endangered only have a small number left in the wild and are at risk of dying out.

Many countries are working hard to protect these species and have created wildlife reserves where these animals and their homes are protected.

Conservation (protecting animals and plants) is important to take care of our world.

PACIFIC
WALRUS

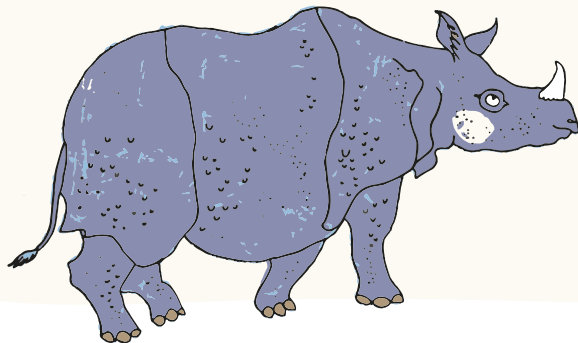


MAGELLANIC
PENGUIN



The Javan rhino has folds of skin that look like armour plating

JAVAN
RHINOCEROS



TIGER



MOUNTAIN
GORILLA

